

BORN FROM NATURE, PROVEN BY SCIENCE

Innovative Health Solution

INGREDIENTS | ODM | BRAND



YUHAN CARE Health & Lifestyle
Company of YUHAN Corp.

“The sound sovereignty of a nation begins with its healthy citizens.”

Dr. New, the Founder of YUHAN

Driven by a strong affection towards the people, Dr. Ilhan New, the founder of Yuhan, dedicated his life to enhancing the health and wellbeing of Korea. With his guidance, Yuhan has committed itself to the development of Korea's pharmaceutical industry and has risen to become the country's No.1 pharma group.



Dr. New and Yuhan, The Pioneer of Natural Health Solution

Dr. New's passion for natural ingredients sparked the inception of Yuhan Care. In the 1920s, he applied a scientific lens to investigate the benefits of Korean ginseng, previously used only in traditional remedies. As a pioneer in natural health solutions, he aimed to uncover the hidden potential of traditional ingredients and bring them to the public for improved health and wellbeing. Carrying on Dr. New's legacy, we are dedicated to rediscovering the value of natural ingredients, developing innovative health solutions and enhancing people's lives.



'Neotone Tonic' domestic product in the 1930s. A nourishing ginseng tonic that was supplied to the people who had difficulty in nutrient intake.

Our Drive to Discover Natural & Sustainable Health Solutions

Stronger and more sustainable solution for your health

At Yuhan Care, despite our 97-year history in the pharmaceutical industry, we're constantly pushing the boundaries to create healthcare solutions that are in tune with nature. We're on a mission to uncover the health benefits of the natural resources provided by our planet, using science to validate their efficacy. From humble plants found in fields and forests to ancient traditional remedies, we meticulously study each and every natural resource in our library to unlock its potential as a functional ingredient for health.

Our Journey



"Prevention is better than cure."

Desiderius Erasmus

Our business begins with natural ingredients. We carefully screen natural substances for their targeted functionalities and develop them into health functional food ingredients through clinical trials that prove their health benefits. Natural materials with effects equivalent to those of pharmaceuticals are also developed as new drug candidates. Yuhan doesn't stop there - we also develop finished products utilizing proprietary materials, as well as undertake branding and marketing efforts. A variety of partnerships are possible, from supplying raw materials and branded products to developing private label (OEM/ODM) products.

What We Do For Your Healthier Life

Business Overview

Research & Development

From ingredients to finished products

Ingredients

Through collaboration with in-house R&D experts in microbiology, pharmacy, traditional medicine, genetic, and medical doctors, we research and develop:

- Extraction & Refinement Technology
- Health Functional Ingredients
- New Drug Candidates

Formulation

Through collaboration between in-house formulators and experts in food engineering, pharmacology and chemistry, we develop top-quality:

- Health Functional Foods
- Cosmetics / Skincare
- Personal Care

OEM/ODM

Through in-house R&D and design teams, we are able to provide private label services.

Branding, Marketing and Sales

Brand management and operation

Branding & Marketing

IMC is implemented for in-house and sourced brands including advertising, marketing, and promotions.

Sales

Distribution and sales of products are conducted both online and offline domestically and internationally.

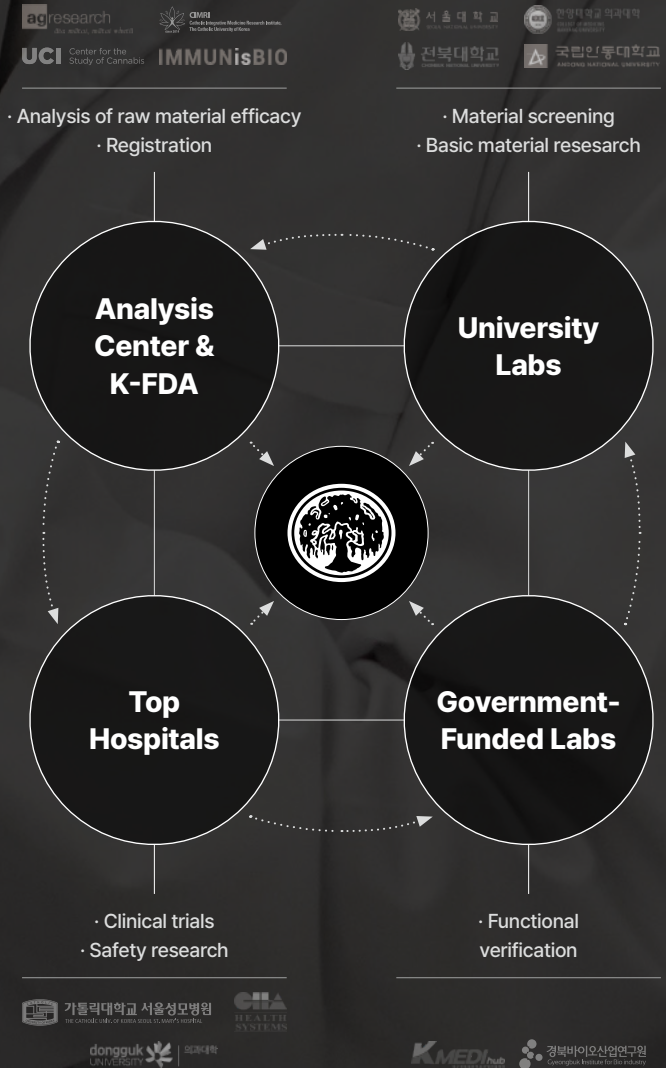
Yuhan Nutraceutical Lab

Where Our Innovation Begins

Discovering Natural Wellness Solutions

We are firm believers in the strength of natural remedies. Utilizing the 97 years of research experience of our parent company, a pharmaceutical company, we have established our own research facilities including the Yuhan Nutraceutical Lab in Yongin, Gyeonggi-do, which is dedicated to creating natural materials and forms, and a CBD research facility in Andong, Gyeongsangbuk-do. Inside Yuhan, a diverse team of experts from fields such as pharmacology, pharmaceuticals, traditional medicine, food science, and microbiology work together to develop innovative, natural solutions.

R&D Collaboration Network



Born from Nature, Proven by Science

Developed by YUHAN CARE

Natural Ingredients

The Proprietary Health Functional Ingredients



IMMUNITY & ENERGY

HENKIV™

Health Function

Enhance Immunity
Reduce Fatigue

Scientific Name

Cervus Elaphus L.

Texture

Light Brown Powder

Dosage Form

Capsule, Tablet

Recommended Daily Dose

480 mg

Beyond Ordinary – The NK Cell Booster for Immunity and Energy

In Yuhan, we have discovered something truly remarkable about our proprietary ingredient, HENKIV™. While immune-boosting products are common, our product goes above and beyond. Deer Velvet, a beloved traditional medicine in Korea, has been used for thousands of years for numerous benefits, including promoting growth in children, restoring energy, and strengthening the body. However, its actual efficacy remained unexplored until our 6-year research with AgResearch in New Zealand.

Through clinical trials, we discovered that our HENKIV™ ingredient activates NK cells and enhances the immune system, however, that's not where the remarkable benefits of HENKIV™ end. Our research with Korea's most famous cancer treatment hospitals revealed that when used in conjunction with cancer treatment, HENKIV™ actually reduces the size of cancer cells and tumors.

Pure deer velvet,
sustainably
harvested from
Halal farms
in NZ's pristine
nature



Animal Welfare without Compromise

Our HENKIV™ ingredient is derived from the core raw material, deer velvet, obtained by cutting the antlers of male deer that regrow each spring. This process is essential for the safety of both humans and animals and is carried out under strict government supervision in New Zealand. Our velveting process is conducted with the utmost care to minimize stress and discomfort for the deer, on certified farms under veterinary supervision. We source only the finest deer velvet from healthy, free-roaming deer living in New Zealand's pristine nature.

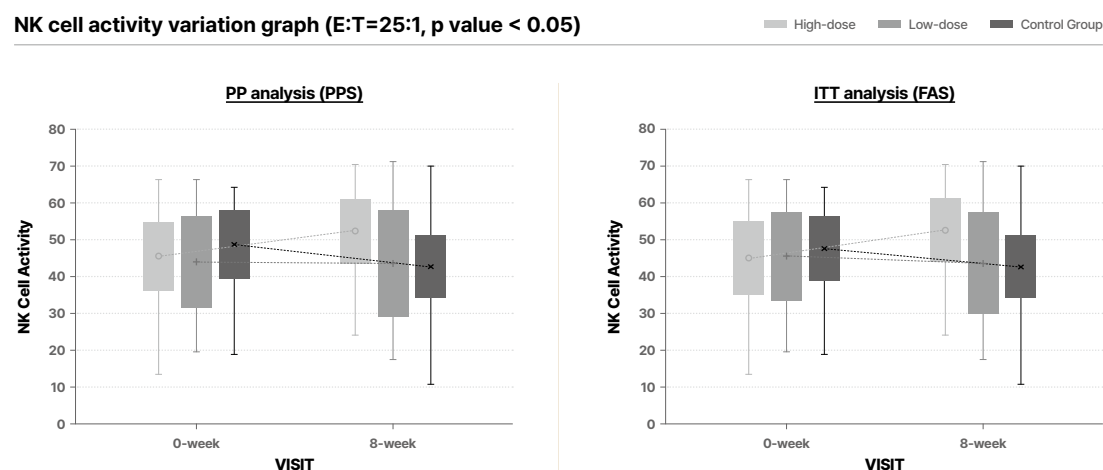
Clinical Trial Results

A notable rise in NK Cell activity and Immune-related cytokine (IFN- γ) levels were observed after 8 weeks of oral intake of HENKIV™.

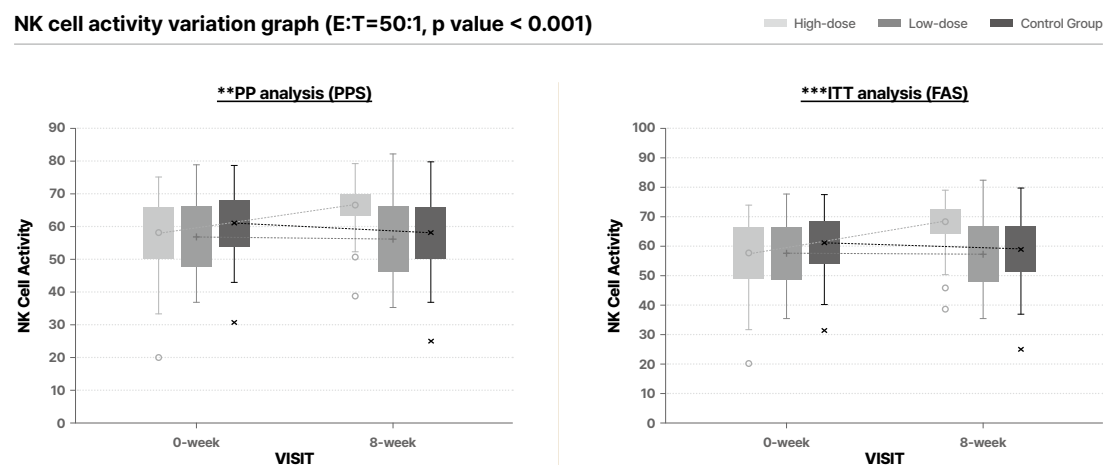
NK Cell Activity

Witnessed significant increase in activity of NK cell, a specialized immune effector cell type that plays a critical role in immune activation against abnormal cells.

NK cell activity variation graph (E:T=25:1, p value < 0.05)



NK cell activity variation graph (E:T=50:1, p value < 0.001)



Source A 8-week, multi-center, randomized, double-blinded, placebo-controlled Study of YHC-BE-2040 to evaluate efficacy and safety on immune function / Remark E:T: Effective-to-target, PP: Per protocol, ITT: Intention-to-treat

IFN- γ Cytokine

In ITT analysis, we witnessed significant increase in IFN- γ which is a cytokine that plays an important role in inducing and modulating an array of immune response.

IFN- γ variation (PP analysis, p value < 0.05)

	High-dose N = 40			Low-dose N = 40			Control Group N = 40			p-value
	n	Mean \pm SD	Min / Max	n	Mean \pm SD	Min / Max	n	Mean \pm SD	Min / Max	
Visit 2	32	3.19 \pm 3.10	0.9 / 16.8	36	5.19 \pm 6.47	0.9 / 29.3	38	5.74 \pm 5.62	0.9 / 23.3	.256
Visit 4	32	3.94 \pm 4.72	0.9 / 21.6	36	5.29 \pm 7.85	0.8 / 38.6	38	4.55 \pm 4.12	0.8 / 15.6	.660
Change from baseline	32	0.74 \pm 2.61	-2.9 / 12.5	36	0.10 \pm 4.01	-5.5 / 22.2	38	-1.20 \pm 4.35	-21.8 / 8.0	.021\$*
tp-value		.100†			.063†			.068†		

p < .05 *, p < .01 **, p < .001 *** | \$: Kruskal-Wallis Test | † : Wilcoxon's signed rank test

IFN- γ variation (ITT analysis, p value < 0.01)

	High-dose N = 40			Low-dose N = 40			Control Group N = 40			p-value
	n	Mean \pm SD	Min / Max	n	Mean \pm SD	Min / Max	n	Mean \pm SD	Min / Max	
Visit 2	40	4.40 \pm 5.75	0.9 / 30.0	40	5.41 \pm 6.36	0.9 / 29.3	40	5.56 \pm 5.54	0.9 / 23.3	.510\$
Visit 4	38	4.44 \pm 5.20	0.9 / 21.6	38	5.41 \pm 7.73	0.8 / 38.6	38	4.55 \pm 4.12	0.8 / 15.6	.826\$
Change from baseline	38	0.47 \pm 2.97	-9.9 / 12.5	38	-0.00 \pm 3.94	-5.5 / 22.2	38	-1.20 \pm 4.35	-21.8 / 8.0	.009\$**
tp-value		.076†			.032†*			.068†		

E:T: Effective-to-target, PP: Per protocol, ITT: Intention-to-treat

GUM (GINGIVAL) HEALTH

DENJOLEX™

Health Function
Reduce Gum Inflammation

Scientific Name
Panax notoginseng
Rehmannia glutinosa

Texture
Light Brown Powder

Dosage Form
Capsule, Tablet

Recommended Daily Dose
972 mg

The Key Functional Ingredient for Gum Pain Ease and Gleaming Smile

Many older adults experience gum issues, but finding effective solutions has been a challenge. That's why Yuhan took inspiration from ancient herbal remedies to create DENJOLEX™, a unique blend of two Asian roots, Notoginseng and Prepared rehmannia root.

Notoginseng, known to be more valuable than gold, boasts a wealth of Saponins that aid in wound healing and pain relief. Meanwhile, prepared rehmannia root is a root herb known for boosting immunity and supporting joint, bone, and muscle health. By combining these two powerful herbs, Yuhan has developed a groundbreaking solution for gum health that can be used in the comfort of your own home. Clinical studies have shown impressive results in reducing gum inflammation, making DENJOLEX™ a cutting-edge solution to this common health issues.



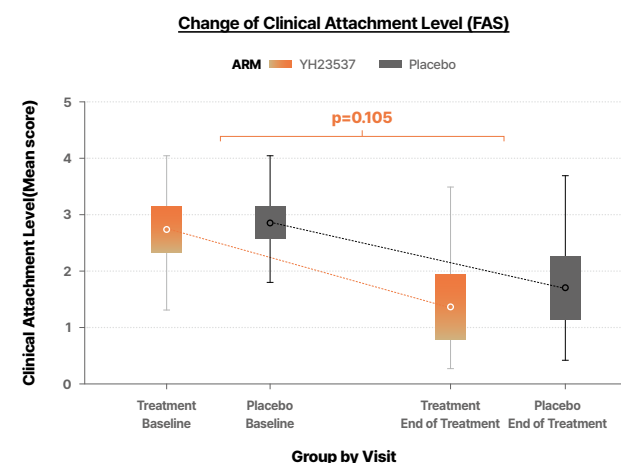
Clinical Trial Results

DENJOLEX™ showed significant improvement in Gingival Index (GI) and Clinical Attachment Level (CAL), both indicators of gum health, in a clinical trial.

Improvement in Gum Health

Noted significant improvements in Clinical Attachment Level (CAL) and Gingival Index (GI).

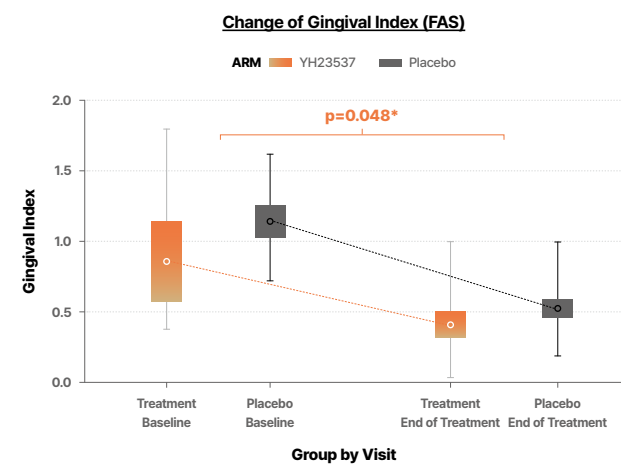
1) Primary Efficacy Endpoint / CAL (Mean score)



- At the end of the treatment, the mean CAL score was 1.36 ± 0.83 in the DENJOLEX™ group and 1.75 ± 0.80 in the placebo group, showing a statistically significant difference between the two groups ($p=0.019$).

- After 12 weeks of IP administration, the changes in the mean CAL score within each group were statistically significant for both the DENJOLEX™ group ($p<0.001$) and the placebo group ($p<0.001$).

2) Secondary Efficacy Endpoint / GI (Mean score)



- After 12 weeks of IP administration, the changes in the mean GI score decreased in both the DENJOLEX™ group (-0.53 ± 0.28) and the placebo group (-0.36 ± 0.39), showing a statistically significant difference between the groups ($p=0.048$).

FAT & WEIGHT LOSS

ROSA FLORA™

Health Function

Fat / Weight Loss
Lower Cholesterol
Improve NAFLD

Scientific Name

Rosa Multiflora THUNB

Texture

Light Brown Powder

Dosage Form

Capsule, Tablet

Recommended Daily Dose

960 mg

A Game-Changing Functional Ingredient for Obesity and Metabolic Disorders

As we age, weight gain is easier due to changes in eating and slower metabolism. This can lead to adult diseases linked to high triglycerides, cholesterol, and fatty liver.

Yuhan developed a solution to reduce body fat and address adult disease symptoms. In our pursuit to find a solution to obesity and adult disease, we screened over 300 natural substances and found the solution in Rosa Multiflora, a Korean wild plant.

It is a non-toxic plant with strong medicinal properties, has long been used as a traditional remedy in Asia. Our research confirmed its ability to promote fat break down and reduce blood lipid levels by generating heat through animal trials.

ROSA FLORA™ is poised to become a game-changer in the fight against obesity and metabolic diseases.

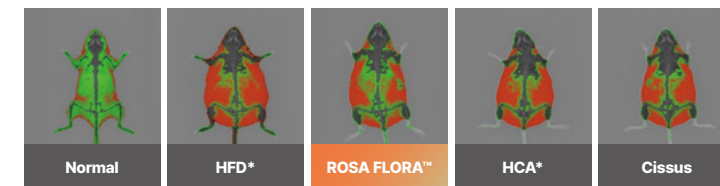
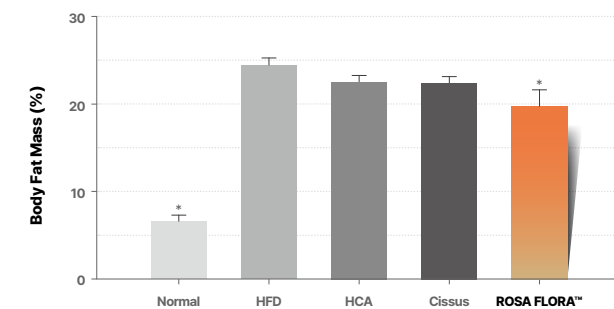


In Vivo Results

ROSA FLORA™ showed significant improvement in improving body fat mass and cholesterol and triglycerides in blood in animal models. Additional human clinical trials are ongoing.

Improvement in Body Fat (DEXA)

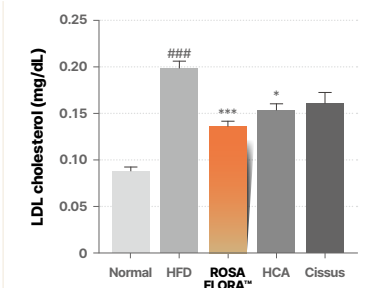
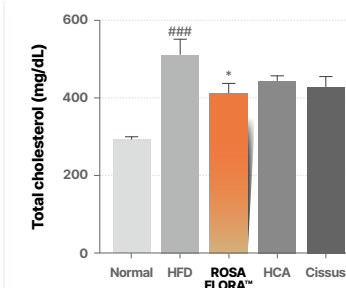
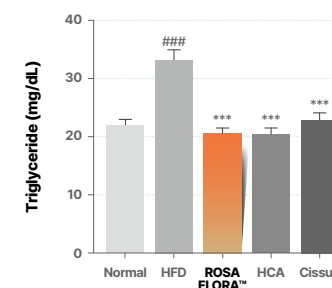
In high-fat-diet-fed mouse model, Rosa Flora™ exhibited stronger results in lowering body fat mass (DEXA) compared to two other functional ingredients available in the market.



HFD: High Fat Diet | HCA: Garcinia Cambogia

Improvement in Blood Lipids

In high-fat-diet-fed mouse model, Rosa Flora™ exhibited superior results in lowering Triglyceride, Total Cholesterol, and LDL Cholesterol compared to existing functional ingredient.



MENOPAUSE RELIEF

BAEKSUO COMPLEX

Health Function

Relieve Menopausal Symptoms

Scientific Name

Cynanchum wilfordii Hemsley
Angelica gigas Nakai
Phlomis umbrosa Turczaninow

Texture

Light Brown Powder

Dosage Form

Tablet, Soft Gel, Capsule, Tonic, Jelly, Gummy

The Only Safe & Effective Menopause Solution

At Yuhan, we're proud to bring an ancient Korean remedy into the modern world. Baeksuo, a root herb long valued in Korean medicine for its rejuvenating properties, is the foundation of our innovative health solution.

Through rigorous clinical studies, we've discovered that our Baeksuo Complex can alleviate the pains and symptoms of menopause, a universal experience for women. Not only is it clinically proven to relieve 10 menopausal symptoms, it also offers peace of mind as a safe choice - our product does not increase the risk of breast and uterine cancer for women as it does not bind to estrogen receptors, unlike hormone replacement therapy and other phytoestrogens such as black cohosh and soy isoflavone.

Join us in embracing the power of nature, enhanced by science.



Clinical Trial Results

The effectiveness and safety of Baeksuo Complex in relieving menopausal symptoms have been clinically validated. It has been proven to alleviate 10 symptoms according to Kupperman's Index without posing any risks, as it does not bind to estrogen receptors, which can potentially increase the risk of breast and uterine cancer for women.

Efficacy (Clinical Trials)

12-week Human Trial

Menopausal Women: 10 Symptoms Improved

- | | |
|----------------|-----------------|
| Hot Flash | Night Sweats |
| Paresthesia | Insomnia |
| Nervousness | Melancholia |
| Vertigo | Fatigue |
| Rheumatic pain | Vaginal Dryness |

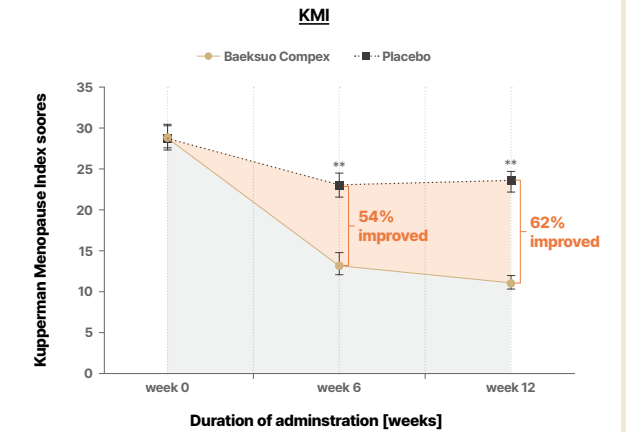
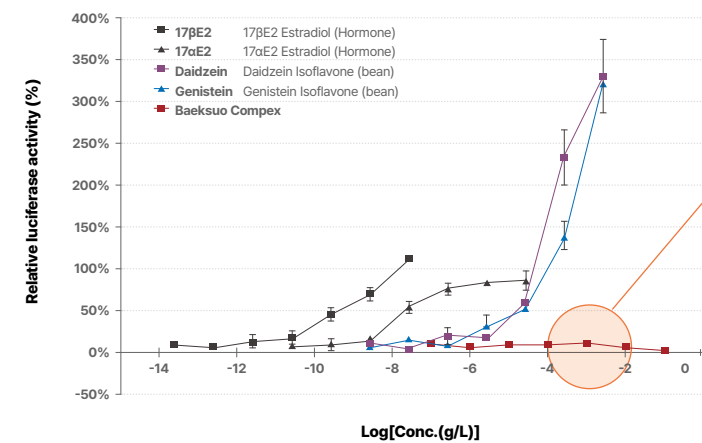


Fig 1. Changes of Kupperman Menopause Index (Mean±SE) during 12 weeks administration of Baeksuo Complex and placebo.
 SE: Standard Error, **: Statistically significant compared between groups; p<0.01 by t-test(ITT)

Safety (In Vivo)

Baeksuo Complex has been proven to be safe, as it does not bind to estrogen receptors that can increase the risk of breast and uterine cancer in women.



Baeksuo Complex does not interfere with hormones, while chemical estradiol and soy isoflavone do.

*Test Protocol: OECD Guideline 455 (Stably Transfected Human Estrogen Receptor-α Transcriptional Activation Assay for Detection of Estrogenic Agonist Activity of Chemicals)

KOREAN CANNABIDIOL (CBD)

Yuhan Care is a leading Cannabidiol R&D institution officially approved by the Korean government, conducting legal CBD research in the HEMP Regulation-Free Zone located in Andong, Gyeongsangbuk-do. Yuhan Care is pioneering the CBD-related market by researching various applications such as medical devices and skincare using the highest quality CBD isolate.

CBD ISOLATE



≥99% purity at pharmaceutical level

- Supercritical Fluid Extraction and chromatography.
- Extract with non-toxic CO2 for wide range of cannabinoids and terpenes.

HEVOIR



A skin-calming solution for troubled skin

Cannacare Complex™

- 8 times higher anti-inflammatory effect than TECA(Madecassic acid, asiatic acid, asiaticoside) extracted from Centella asiatica leaf. (In vitro)
- The patented complex extracted from Korean hemp roots and stems.
- Contains organic osmolytes(betaine and inositol) that develop the tight junction(TJ) in the skin barrier.

OTC CREAM



A diaper cream for treating rashes

- A topical cream for diaper rash, a common skin irritation in infants.
- Contains CBD isolate which has antibacterial and anti-inflammatory effects against fungal and bacterial infections.



Born from Nature, Proven by Science

Developed by YUHAN CARE

Products

Health Functional Foods



INNER FLORA

Vaginal & Gut Health | PMS | UTI



1

No.1 in Vaginal Health

As the No.1 women's probiotics in Korea, it has topped the charts for sales, brand awareness and customer satisfaction for 5 years.

2

Clinically Proven

Crafted specifically to support women's reproductive wellness, our formula contains ingredients with proven clinical benefits.

3

No Artificial Additives

Free of food additives like titanium dioxide, stearic magnesium, and artificial fragrances.

Supporting Women's Reproductive Health

Inner Flora, the top brand for vaginal probiotics among Korean women, is a women-only brand that cares for reproductive health. More than 75% of Korean women suffer from vaginal infections, but less than half of them receive treatment because vaginal health is still not a familiar topic to the general public due to cultural reasons. Yuhan is breaking down these perceptual barriers and providing women-only solutions that can restore women's confidence.



Inner Flora Premium

Dosage form | Powder

Probiotics for women's vaginal, gut, and immune health. Contains three clinically proven strains and zinc. Delicious granules naturally flavored with lemon juice.



Inner Flora UREX®

Dosage form | Capsule

The best-selling women probiotics in Korea. Contains UREX® probiotics which cares gut and vaginal health.



Borage Oil

Dosage form | Soft Gel

GLA extracted from borage flowers harvested from Ashburton, NZ. Improves discomforts from PMS and hypersensitive skin.



Cranberry

Dosage form | Capsule

Cranberry extract from whole par cranberries including juice, flesh, skin and seed cares urinary health by preventing UTI.

CORE RESET

Weight Loss | Gut Health | Muscle Health



1

Healthy Weight Loss

Helps with weight loss through multiple functions, such as fat decomposition with plant-based ingredients.

2

Core Nutrients for Body

Aims to provide essential nutrients, like probiotics and protein, for healthy and fulfilling life.

3

Premium Quality

Only use the best, scientifically supported and responsibly sourced ingredients from nature.

4

No Artificial Additives

Free of food additives and processed sugars for a clean and balanced diet.

Reset Your Core Nutrition

Core Reset is designed to provide essential nutrients for maintaining a healthy lifestyle without additives. Our dietary product presents a healthy weight loss plan with proven clinical results. It focuses not only on fat loss but also on controlling blood sugar spikes and providing antioxidants. Each product synergizes with the others to deliver even more effective functional results.



Blood Sugar Cut Diet

Dosage form | Tablet

Triple care functional supplement which helps control blood sugar levels, promote fat loss, and provide antioxidants with 100% plant-based ingredients.



Gluten Cut GCD Enzyme

Dosage form | Powder

100% plant-based patented fermented enzyme that breaks down carb, negative protein, fat and flour to boost digestion.



Vium Psyllium Husk

Dosage form | Small pills

Improve bowel movement and blood cholesterol. Dual functional dietary fiber, psyllium husk, supports gut health.



Protein Plus+

Dosage form | Powder

Contains A2 proteins from free-range cows in Nea Zealand and Actazin green kiwi, along with 11 vitamins and minerals.



Omnibiotics

Dosage form | Capsule

Contains patented probiotics, prebiotics and postbiotics for optimal gut microbiome, 2B CFU guaranteed.



Omnibiotics

Dosage form | Granule

Omnibiotics in a form of lemon-flavored chewable granules. 1B CFU guaranteed.

ESTRITION

Menopause Relief



1

Natural

A pure and natural solution with no hormones, made from three distinct traditional Korean root herbs.

2

Safe

Does not bind to the estrogen receptors but exhibit an effect similar to that of estrogen.

3

Clinically Proven

Proven to alleviate 10 menopausal symptoms such as hot flashes, insomnia and depression.

4

Certified

Registered as health functional food in FDA NDI, Canada NPN, EFSA Novel Food and K-FDA.

The Only Safe & Effective Menopause Relief

The market offers various options for managing menopause, such as hormone therapy and phytoestrogens like soy isoflavone and black cohosh. However, these treatments have been shown to increase the risk of women's diseases like cancer by binding to estrogen receptors. Our Baeksuo Complex, on the other hand, is clinically proven to be safe and effectively relieve 10 symptoms of menopause without any side effects as it does not bind to estrogen receptors.



Baeksuo All-in-One

Dosage form | Ampoule + Tablet

In combination of tart cherry flavored ampoule and Vitamin D tablet, it provides powerful nutrition while relieving menopausal symptoms.



Baeksuo Skin Collagen

Dosage form | Jelly

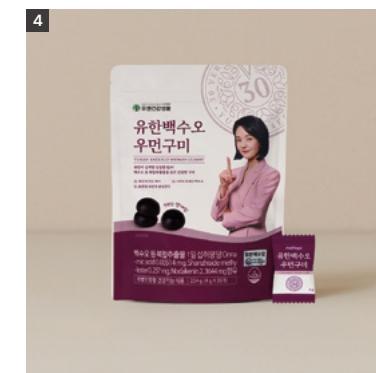
A berry flavored beauty jelly for youthful and glowing skin for women in their menopausal transition.



Baeksuo Master 9

Dosage form | Soft Capsule

A total nutrition pack for women. Improves bone, blood, eyes and cognition health while relieving menopausal symptoms.



Baeksuo Women Gummy

Dosage form | Gummy

An easy wellness routine for women in the menopausal transition. Handy gummies flavored with berries help reduce menopausal symptoms.



Baeksuo Pure

Dosage form | Tablet

Reduces menopausal symptoms without side effects. Purely made of 100% plant-based ingredients.

NATURAL SUPPLEMENTS

Born from Nature, Proven by Science

We believe in harnessing the power of nature to attain the finest nutrition through whole foods, fruits, and vegetables. In today's fast-paced society, maintaining healthy and sustainable eating habits can be a challenge.

That's why our mission is to make it easy for everyone to meet their nutritional needs with natural supplements sourced from the best and most wholesome sources, just like the food we eat every day.



1

Natural Active Ingredients

We source only the finest natural health ingredients from nature and extract them using advanced technology to enhance their potency.

2

Clean & Safe Recipe for All

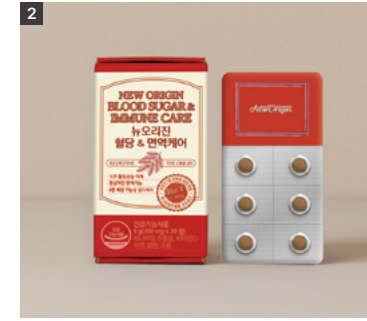
Our supplements are safe for all family members, including babies, pregnant women, and adults, as they are free of chemical solvents and fillers.



rTG Omega3

Dosage form | Soft Gel

100% plant-based rTG Omega-3 for blood circulation and eye health, with premium purified rTG.



Blood Sugar & Immune Care

Dosage form | Tablet

A total 8 multi-care functional supplement including blood sugar spike control, immune support and antioxidants.



Milk Thistle

Dosage form | Tablet

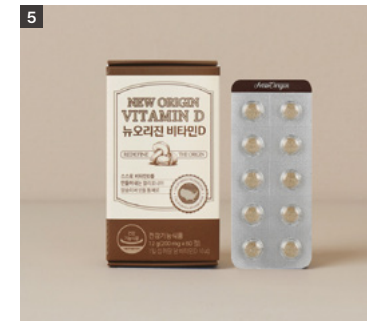
Wild milk thistle for liver health hand-picked in Himalaya Mountain and extracted without chemical solvents.



Vitamin C

Dosage form | Tablet

Natural Vitamin C enriched with hand-picked Amazon Golden Camu Camu and Acerola fruits. Free of food additives.



Vitamin D

Dosage form | Tablet

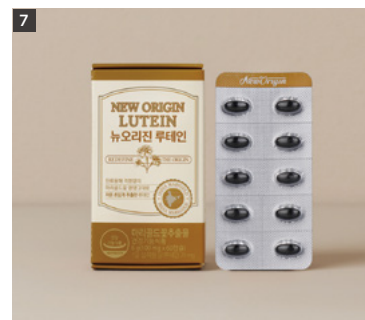
Natural Vitamin D made of mushrooms sunbathed in California.



Fish Bone Calcium & Vitamin D, K

Dosage form | Tablet

Natural Calcium made of Ling Fish from NZ. Contains Vitamin D and K to prevent osteoporosis.



Lutein

Dosage form | Soft Gel

Lutein extracted via supercritical extraction method from natural Marigold flowers. Hexane-free.



Lutein Astaxanthin

Dosage form | Soft Gel

Lutein and astaxanthin care eye fatigue and aging at a time.



Green Mussel Extract

Dosage form | Soft Gel

Green mussel extracts for joint health carefully harvested and purely extracted in Marlborough, NZ.

KIDS SUPPLEMENT

Smart and Healthy Nutrition for Growing Children



1

Natural Active Ingredients

We source only the finest natural health ingredients from nature and extract them using advanced technology to enhance their potency.

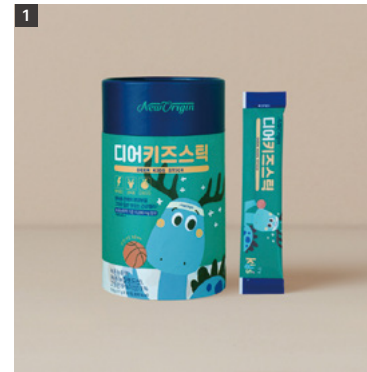
2

Clean & Safe Recipe for Kids

Our supplement is safe for kids as it is free from chemical solvents, fillers, and artificial food additives.

Healthy And Nutritious Choice for Kids

Ensuring proper nutrition for children's optimal growth is of utmost importance. While a balanced natural diet can provide the necessary nutrients for most children, picky eaters, children who are not growing well, or those with dietary restrictions may need supplements to fill nutritional gaps. That's why we have carefully crafted a premium selection of kids' supplements, designed with the highest quality and safety standards, to support their growth and development.



Deer Kids Stick

Dosage form | Jelly

A healthy grape-flavored jelly for boosting immunity and energy of growing kids. Contains whole red ginseng and natural grape juice.



Keycret Jelly

Dosage form | Jelly

A healthy apple-flavored jelly containing lactobacillus fermented oyster extract, designed for growing children to support growth.



A2 Milk Grainbar

Dosage form | Snack

Healthy snack for baby containing premium 8 grain formula with A2 milk for easy digestion.



Organic Rice Puffs

Dosage form | Snack

An organic baby snack containing A2 protein and organic Korean white rice. Suitable as the very first snack for babies.



Baby Probiotics

Dosage form | Granule

Milk-based probiotics easily melt into formula or foods. Contains 8 patented probiotics and 2 prebiotics. Taste like natural yogurt.

Immunity | Energy | Fatigue Relief

DEER VELVET

1

Finest Quality

Sourced exclusively from a farm in NZ where deer roam freely in the wild environment of the Southern Alps.

2

Holistic

Extract every nutrient from antlers by utilizing the entire deer velvet, from tip to bottom.

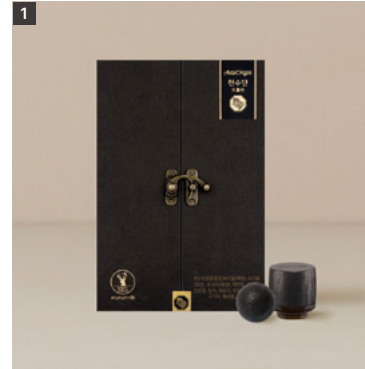
3

Clinically Proven

Clinically shown to boost immunity by activating NK cells and reduce fatigue.

Beyond Ordinary, A Natural Immune and Energy Enhancer

For thousands of years, deer velvet has been a beloved traditional remedy in East Asia, particularly in Korea, where it has been consumed for its disease-preventing properties, growth support for children, and energy-boosting effects. Despite its widespread use, the true benefits of deer velvet were largely unknown. However, we conducted extensive research over the course of 6 years and discovered that deer velvet is a clinically-proven functional food for immunity and energy, thanks to its ability to activate NK cell function and enhance overall immunity.



Cheon-su-dan

Dosage form | Soft Chew

Reinvented with the 400-year-old recipe from Korean medicine with the premium NZ deer velvet, Korean red ginseng and five berries to provide energy and vigor.



Sooshin Energy Shot

Dosage form | Ampoule + Tablet

Specially designed for immunity and energy. Contains milk thistle tablet on the top and tonic with deer velvet and red ginseng on the bottom.



Whole Deer Velvet & Red Ginseng Stick

Dosage form | Tonic

Extracted deer velvet and red ginseng in a 1:1 ratio and 16 traditional herbs for convenient immune boost.



Whole Deer Velvet & Red Ginseng Extract

Dosage form | Concentrate

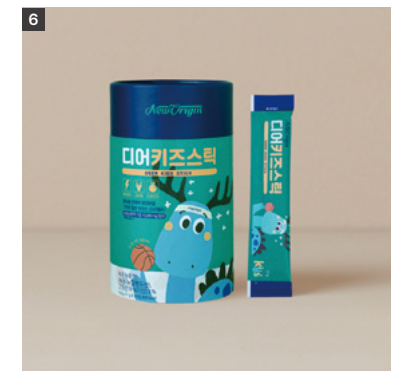
A nutrient-dense concentrate with NZ deer velvet, manuka honey, and Korean red ginseng. Take 1 spoon daily.



Whole Deer Velvet Mild

Dosage form | Tonic

A traditional tonic containing deer velvet and 23 kinds of traditional herb medicines.



Deer Kids Stick

Dosage form | Jelly

A healthy orange-flavored jelly for kids. Sweetened with unrefined sugar and fruit juice.



Fatigue Relief | Immunity | Circulation

WHOLE RED GINSENG

1

Origins of Korean Ginseng

Sourced from Gimpo-Paju, the ideal growing region for ginseng with fertile soil and cool climate under stringent quality control.

2

Holistic

Whole red ginseng, including roots, fruits and leaves, are extracted to retain diverse ginsenosides, polyphenols and flavonoids.

3

Cutting Edge Tech

Our proprietary 'Double Ultra' extraction technology ensures high ginsenoside concentration.

Fight for Fatigue and Get Your Energy Back

Ginsenoside is widely recognized for its many health benefits, including improved circulation, increased energy, strengthened immunity, enhanced cognitive function, and reduced fatigue. Although there are various types of ginsenosides found throughout ginseng, most products on the market only use root extracts. However, it's important to note that the fruits and leaves of ginseng also contain unique ginsenosides not found in the roots, as well as higher levels of flavonoids and polyphenols. This is why we go the extra mile to use the entire red ginseng plant, including 6-year-old roots, fruits, and leaves, despite the challenges it presents.



Whole Red Ginseng Stick

Dosage form | Extract

A portable drink containing 12 mg of whole red ginseng for workers, students or anyone who needs energy.



Whole Red Ginseng Premium

Dosage form | Concentrate

Nutrient-rich concentrate containing whole red ginseng from root to fruit and leaf. 1 spoon daily as it is or as hot tea.



Whole Red Ginseng Mild

Dosage form | Tonic

An easy-to-drink red ginseng extract with mild taste containing 6.5 mg of whole red ginseng, traditional herbs and oligosaccharides.



WEB neworigin.co.kr / yuhancare.com

PHONE +82 2-2078-5381 | **E-MAIL** gbd@yuhancare.com